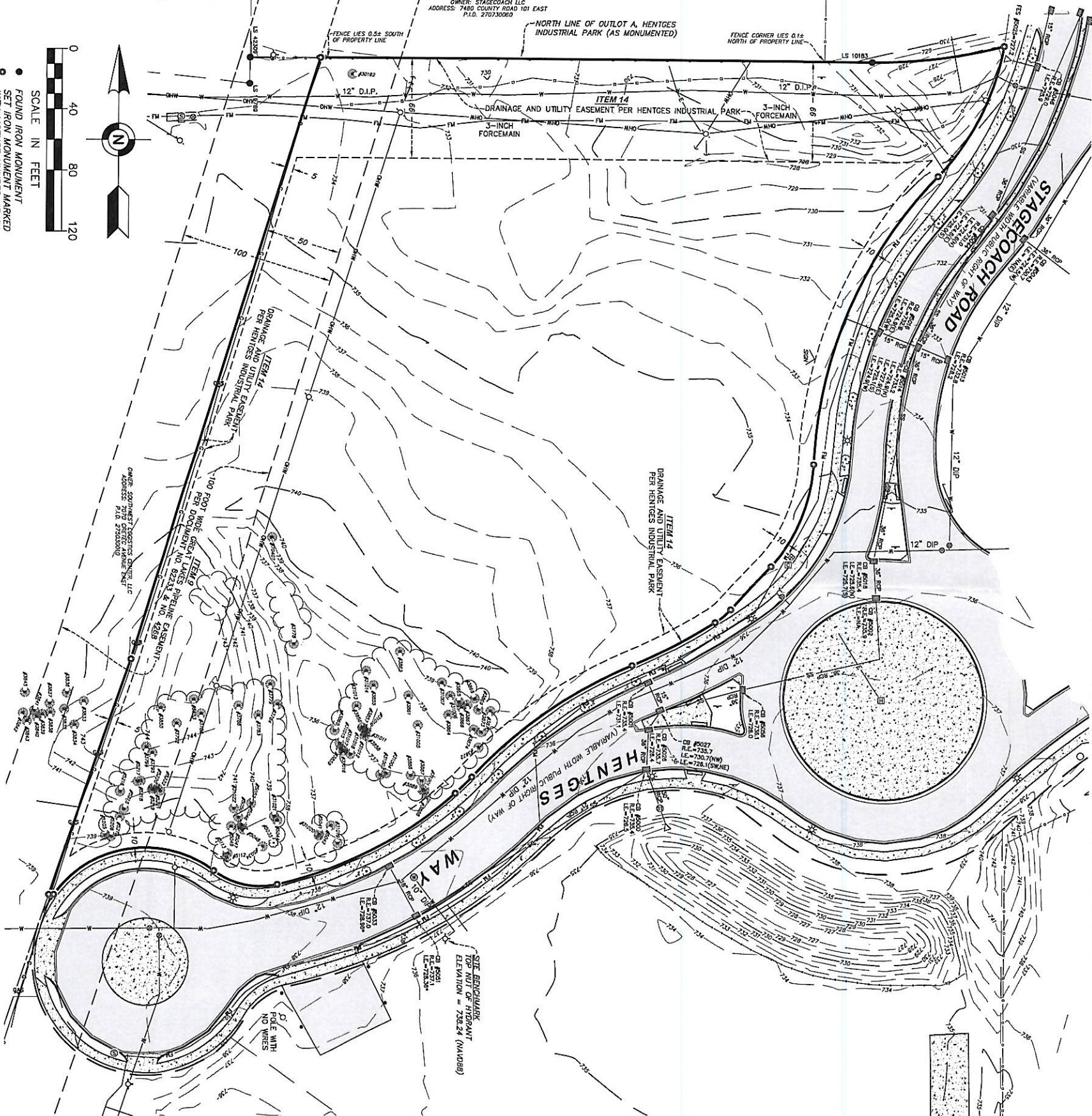


Tree Inventory Table:

Tree Tag #	Tree Species	Number of Trunks	Tree Diameter
3778	PINE	2	9
3779	PINE	1	12
3783	PINE	1	8
3784	PINE	1	16
3786	PINE	1	8
3788	PINE	1	9
3792	OAK	1	11
3794	PINE	1	7
3795	PINE	1	6
3832	PINE	1	18
3833	PINE	1	13
3835	PINE	1	11
3837	PINE	1	9
3838	PINE	1	10
3839	PINE	1	7
3840	PINE	2	10
3841	PINE	3	12
3842	PINE	1	10
3843	PINE	1	7
3845	PINE	1	2
3850	PINE	1	8
3852	PINE	2	26
3853	PINE	1	6
3857	PINE	1	6
3858	PINE	1	7
3859	PINE	1	6
3860	PINE	3	7
3861	PINE	1	35
3862	PINE	1	22
3864	PINE	1	11
3865	PINE	1	6
3866	PINE	1	6
3867	PINE	1	10
3868	PINE	1	7
3870	PINE	1	9
3872	PINE	1	7
3873	PINE	1	8
3874	PINE	1	8
3877	PINE	1	12
3886	PINE	1	8
3888	PINE	1	8
3889	PINE	1	6
3894	PINE	1	7
3935	OAK	1	16
5041	PINE	1	7
5042	PINE	1	6
5044	PINE	1	7
5046	PINE	1	6
5047	PINE	1	6
5048	PINE	1	6
5049	PINE	1	6
5050	PINE	1	6
5052	PINE	1	6
5112	PINE	1	7
5113	PINE	1	12
5205	PINE	1	12
5206	PINE	1	12
5212	PINE	1	12
5213	PINE	1	4
5217	PINE	2	7
5218	PINE	6	10
5219	PINE	1	7
5220	PINE	7	7
5221	PINE	1	7
5222	PINE	1	6
30192	PINE	1	12
31001	PINE	1	6
31003	PINE	1	6
31004	PINE	1	6
31006	PINE	1	6
31008	PINE	1	8
31010	PINE	1	8
31011	PINE	1	8
31012	PINE	1	8
31013	PINE	1	6
31014	PINE	1	6
31015	PINE	1	5
31016	PINE	1	5
31017	PINE	1	5
31018	PINE	1	5
31019	PINE	1	6
31020	PINE	1	2
31021	PINE	1	4
31022	PINE	1	8
70407	PINE	2	12



GOPHER STATE ONE CALL NOTE:

List of utilities notified per Gopher State One Call Ticket No. 222919132.

CONTACT: SHAKOPEE UTILITIES WATER  
CENTRALINK - CTLO  
CONSOLIDATED COMMUNICATIONS I  
CENTER POINT ENERGY  
SCOTT COUNTY HIGHWAY DEPT

SHAKOPEE UTILITIES WATER  
SHAKOPEE UTILITIES GAS  
MAGILLAN INDUSTRIAL PARTNERS  
XCEL ENERGY  
CITY OF SHAKOPEE

LEGEND:

- SANITARY MANHOLE
  - STORM MANHOLE
  - △ FLARED END SECTION
  - CATCH BASIN
  - ✱ LIGHT
  - HANDHOLE
  - UTILITY POLE
  - GUY WIRE
  - WATER MANHOLE
  - GATE VALVE
  - HYDRANT
  - COMMUNICATION BOX
  - SIGN
  - GUY SIGN
  - BOLLARD
  - VENT
- UNDERGROUND GAS
  - STORM SEWER
  - WATERMAIN
  - SANITARY FORCE MAIN
  - UNDERGROUND ELECTRIC
  - OVERHEAD ELECTRIC
  - CHAIN LINK FENCE
  - SLIT FENCE
  - TREELINE
  - EXISTING CONTOUR LINE
  - TREELINE
  - TREE
  - BITUMINOUS SURFACE
  - CONCRETE SURFACE

LEGAL DESCRIPTION OF PARENT PARCEL:

Outlot A, Hentges Industrial Park, Scott County, Minnesota  
(Tevens Property, Certificate of Title No. 58078)

GENERAL SURVEY NOTES:

- The orientation of this bearing system is based on the Scott County coordinate grid (NAD 83-2011 Adj.).
- The legal description and easement information used in the preparation of this survey is based on the Commitment for Title Insurance prepared by First American Title Insurance Company, Commitment No. MCS-151118-WPLS dated October 4, 2022 at 7:30 am.
- The surveyed property has direct access to Hentges Way and Stagecoach Road, both being public right of ways.



SCALE IN FEET

- FOUND IRON MONUMENT
- SET IRON MONUMENT MARKED WITH LICENSE NUMBER 47476
- RECORD PLAT BEARING (NXXXXXXE)

REVISIONS

FIELD BOOK	PAGE	FIELDWORK
CHIEF:		
NO.	DATE	DESCRIPTION
1	2023/03/30	Added Zoning Note information
DRAWN BY:	S. DAV	
40978.dwg	FILED	
CHECKED	BY:	
JOB NO. 40978		
FILE NO.		

ALT/ANSPS

LAND TITLE SURVEY

SURVEY FOR:

Kimley Horn & Associates

DEVELOPMENT PARCEL ADDRESS:

Unassigned Address  
Shakopee, Minnesota 55379



475 Old Highway 8 NW, Suite 200  
New Brighton, Minnesota 55112  
PHONE: (612) 466-5300  
WWW.EFNSURVEY.COM  
COPYRIGHT © 2022 By EGAN, FIELD & NOWAK, INC.



